



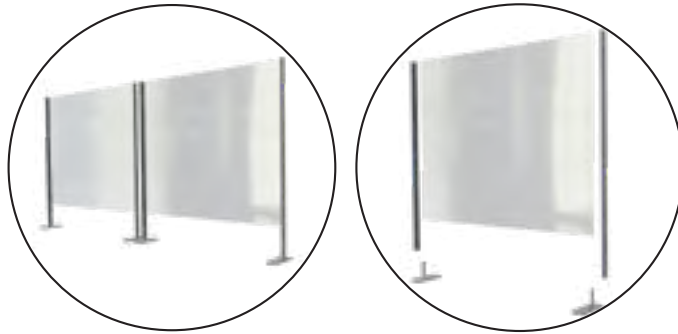
As we get accustomed to a new normal with Covid-19, PNH Solutions is committed to making the transition as easy as possible. Our Healthy Learning product line aims to create a safe environment for both your teachers and your students, by encouraging social distance practices.

More than ever, we believe the right products can inspire the best actions.

About

PNH Solutions is a large format print service provider and custom hardware manufacturer that specializes in turn-key marketing products for events, retail environments, exhibits and trade shows. By closely collaborating with our clients during every stage of the design and fabrication process, we develop, entirely in-house, functional and award-winning products that blend cutting-edge large format print, metalwork, millwork and LED technologies.

Reception Shields



- Two 36" aluminum upright extrusions – set screws for holding the acrylic shield
- Full height or use the built in stop at 6" up for product or payment pass through
- Satin Silver finish



Self adhesive base



Automatic & Manual Pump Dispenser Stands

Automatic Hand Sanitizer Dispenser Stands

- 16" square steel base, secures to upright with 1 screw from side
- Fixed 48" H upright
- Back plate for attaching automatic dispenser with 4x threaded holes based on Purell LTX and TFX Hole pattern
- Back plate includes forward lip for catching liquid
- Unit without sign includes a knob at top for attaching back plate
- Optional top loading sign frame 8.5" W x 11" H or 11" W x 14" H



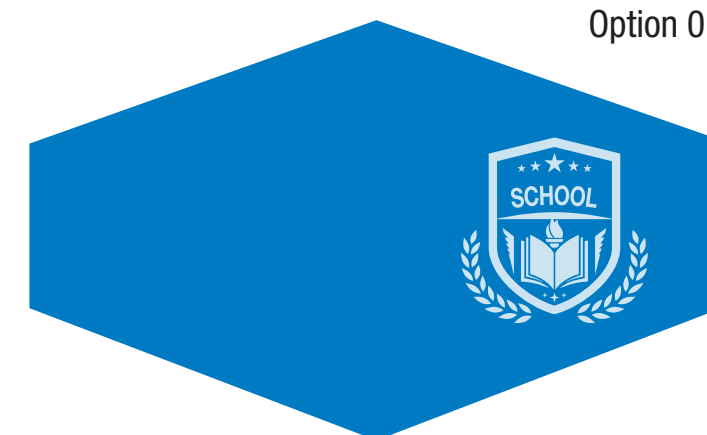
Manual Pump Hand Sanitizer Dispenser Stands

- 12" square steel base, secures to upright with 1 screw from side
- 11" Round steel base, secures to upright with 1 screw from side
- Two upright options: fixed 36" H or telescopic 28-50" H
- Top tray 4" Square, with 2" H lip, steel, secures to top of upright with screw from above - works with hand sanitizer bottles up to 4" W x 3.5" D
- Knob in tray - tightens bottle in place, reduces movement

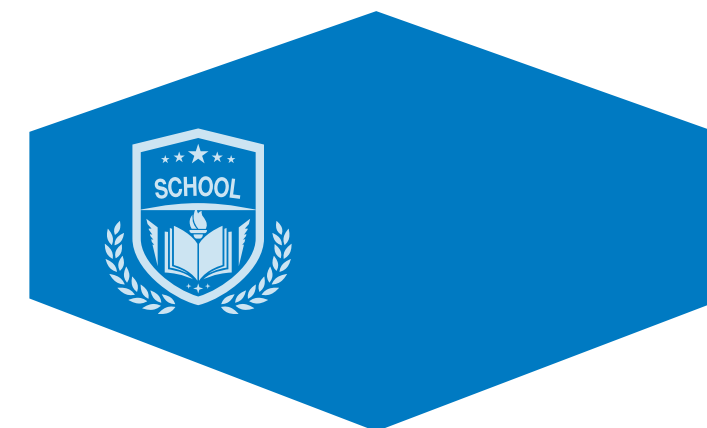


Reusable Fabric Face Masks

- Filter (sold separately) removes at least 99.427% of airborne particles.*
- Create one or more graphic designs with your logo, slogan, company colors, etc. We also offer 33 designs with either patterns or solid colors. Buy in bulk and save!
- As we print the graphics through a dye-sublimation process, they are embedded (sublimated) into the fabric – wash them in the washing machine and reuse them, without the graphics fading, cracking or peeling.
- Each mask has 3 layers: a heavier printed polyester fabric on the outside, a removable filter and a lighter unprinted sleeve for the filter. The filter covers the nose and mouth to provide the protection you require, while keeping you cool and breathing easily.
- Made with OEKO-TEX® compliant fabric** and water-based inks that are free of harmful substances and do not cause any skin or eye irritations.
- The filter is removable and also machine washable. It is rated for 2 to 5 day use in environments with average pollution. The length of use between washes is a personal matter and up to each individual. Replacement filters sold separately in packs of 10.
- With 3 sizes available (S, M & L), 3 layer construction & 2 finishing options (2 elastic headbands with toggles or ear loops), our masks remain comfortably in place.
- Packaged in a convenient carry pouch.
- Made entirely in Canada



Option 01



Option 02

Custom Made Signs

22in x 28in



22in x 28in



- Single or double-sided custom-printed graphics on dye-sub fabric, vinyl, rigid or mesh
- Standard size: 22inw x 28inh – other sizes available
- Finishing options available to strengthen & facilitate installation
- Hardware options available

Floor graphics and self-adhesive graphics



12in x 12in

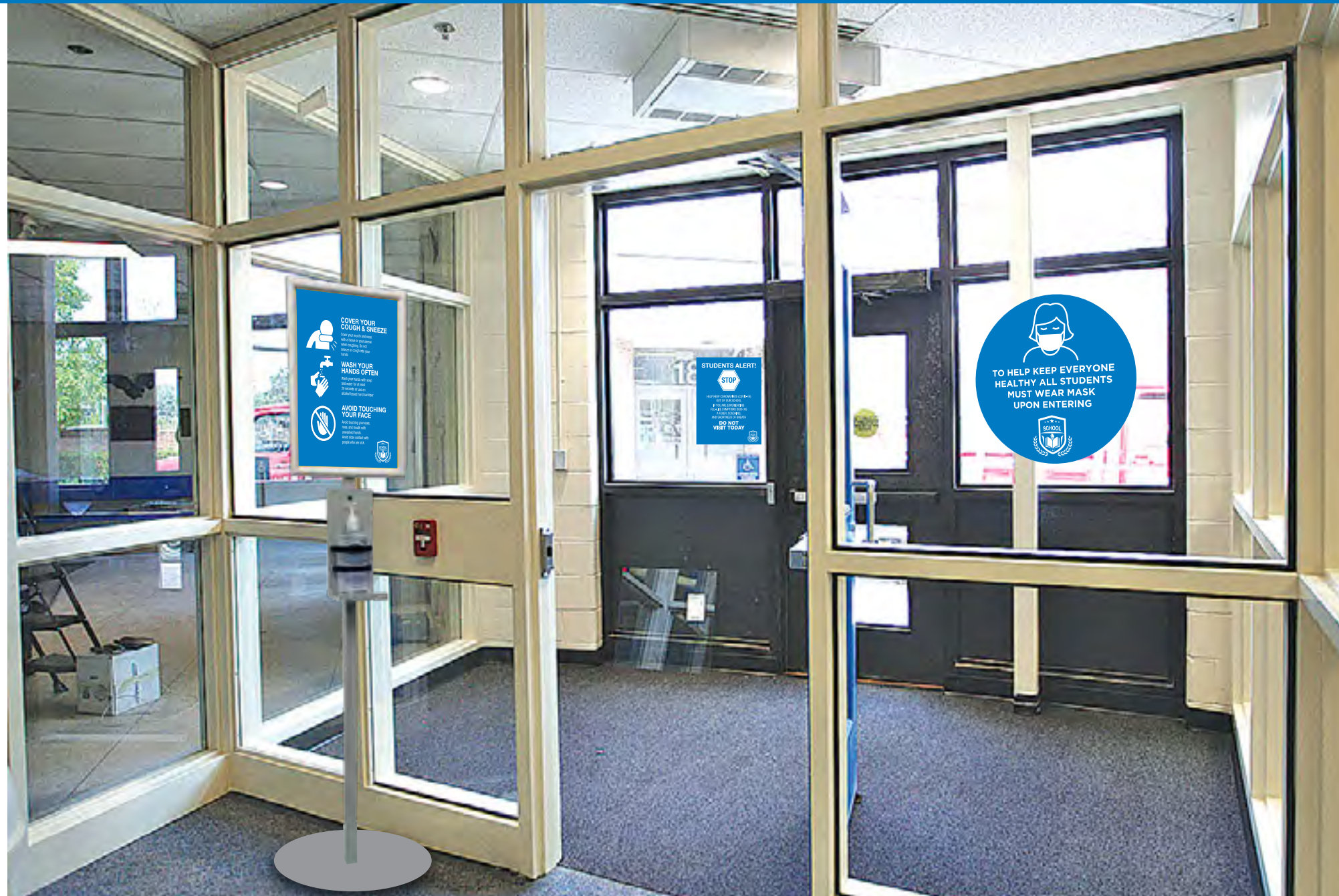
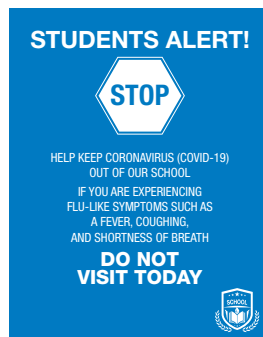
18in x 18in



- Single-sided custom-printed graphics on removable, adhesive vinyl or carpet
- Anti-skid laminate available for adhesive vinyl



Hand sanitizer signs and window stickers



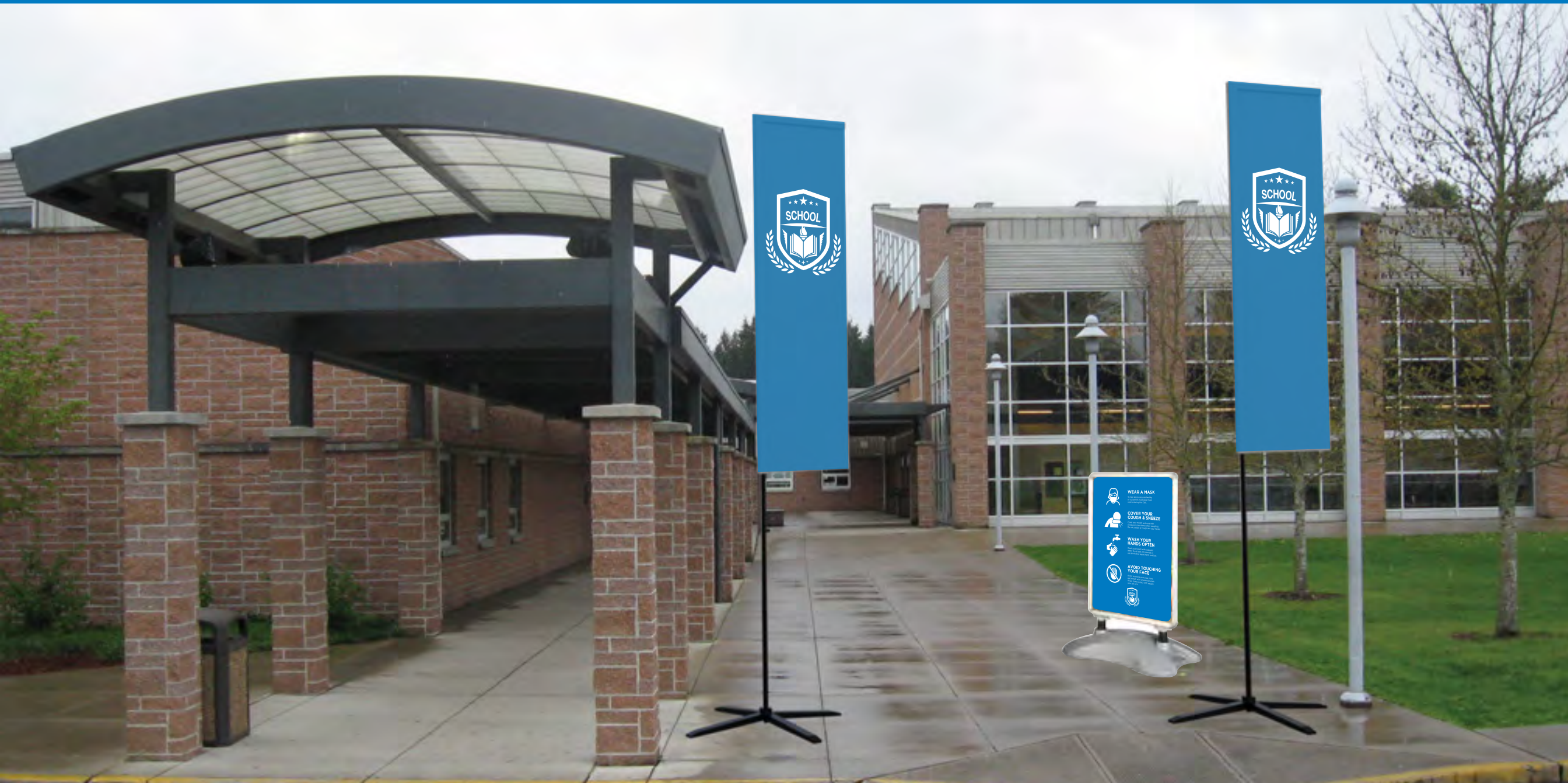




Table divider



Table divider



Coroplast desk shields

